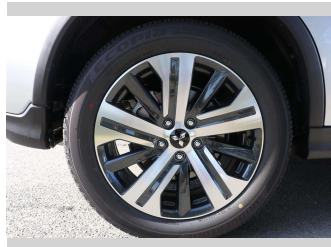
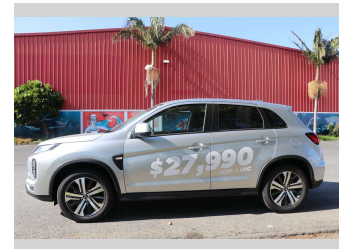
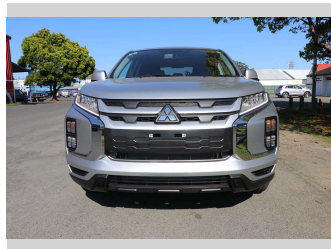
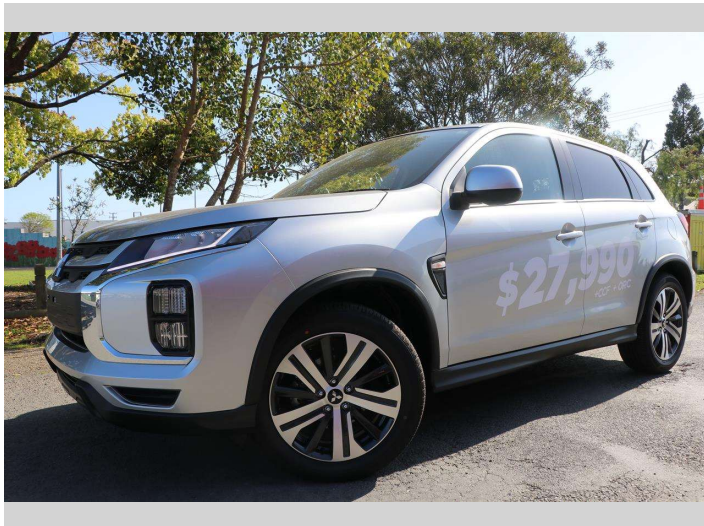



# 2024 Mitsubishi ASX LS 2.0P/CVT



**Purchase Price** **\$27,990**

Includes GST  
Excludes on-road costs of \$933.24

Finance may be available on this vehicle. Ask one of our friendly staff for more information.



Gain peace of mind with Mechanical Breakdown Insurance. **Ask us how.**



**Top features**

- » 5 Star Ancap Safety Ra...
- » ABS Brakes
- » Active Stability Contr...
- » Bluetooth
- » Central Locking
- » Central Locking
- » Child seat anchor poin...
- » Cruise Control
- » Day Time running light...
- » Daytime Running Lights
- » Electric Mirrors
- » Electric Mirrors
- » Electric Windows
- » Electric Windows
- » Parking Sensors
- » Power Steering
- » Reversing Camera
- » Reversing Camera

Body Style  
**5 door, Station Wagon**

Odometer  
**5 km**

Engine  
**1998 cc**

Fuel Type  
**Petrol**

Transmission  
**CVT**

Wheels  
-

VIN  
**JMFXTGA2WPU007228**

Interior  
-

Safety



Based on 2023 UCSR rating for 16-19 models

Reg No.  
**QHK874**

Ext Colour  
**Sterling Silver**

History  
**Brand New**

Seats  
**5 seats**

CO2 Emissions  
★★★★☆☆  
**196 grams/km**

Energy Economy  
★★★★☆☆

**Annual fuel cost of \$3,330  
8.5L per 100km**

Cost per year is an estimate based on petrol price of \$2.80 per litre and an average distance of 14000 km. Emissions and Energy Economy figures standardised to 3P WLTP.

**Stock ID: 480055**



Archibald Cars | Phone 09 408 1900 | Email sales@amotors.co.nz  
143 Commerce Street, Kaitaia, New Zealand  
www.archibaldcars.co.nz