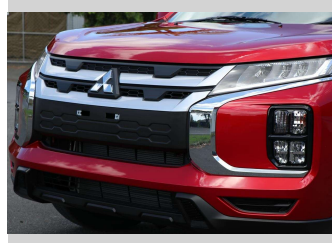
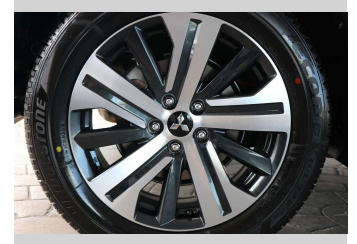
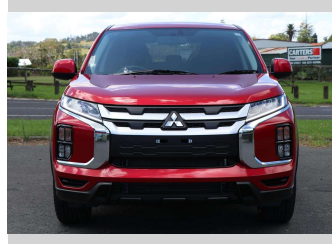


2026 Mitsubishi ASX LS 2.0P/CVT



Purchase Price

\$28,490

Includes GST
Excludes on-road costs of \$995

Finance may be available on this vehicle. Ask one of our friendly staff for more information.



Gain peace of mind with Mechanical Breakdown Insurance. **Ask us how.**



Top features

None Listed

Body Style

5 door, SUV

Odometer

13 km

Engine

1998 cc, Electronic Fuel

Fuel Type

Petrol

Transmission

CVT

Wheels

-

VIN

JMFXTGA2WRU027154

Interior

-

Safety



Based on 2025 VSRR rating

Reg No.

-

Ext Colour

Red Diamond

History

-

Seats

5 seats

CO2 Emissions

★★★★☆☆

196 grams/km

Energy Economy

★★☆☆☆☆

Annual fuel cost of \$3,330

8.5L per 100km

Cost per year is an estimate based on petrol price of \$2.80 per litre and an average distance of 14000 km. Emissions and Energy Economy figures standardised to 3P WLTP.

Stock ID: 519049



Archibald Cars | Phone 09 408 1900 | Email sales@amotors.co.nz
143 Commerce Street, Kaitaia, New Zealand
www.archibaldcars.co.nz