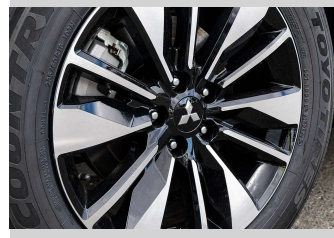
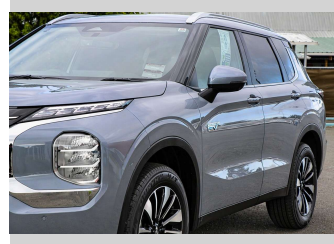


2026 Mitsubishi Outlander LS PHEV/4WD/AT



Purchase Price **\$64,990**

Includes GST
Excludes on-road costs of \$1,490

Finance may be available on this vehicle. Ask one of our friendly staff for more information.



Gain peace of mind with Mechanical Breakdown Insurance. **Ask us how.**



Top features

None Listed

Body Style
5 door, RV/SUV

Odometer
-

Engine
2360 cc, Plug-In Hybrid

Fuel Type
Petrol


Transmission
CVT

Wheels
-

VIN
JMFXDGN0WSZ001505

Interior
-

Safety



Based on 2025 ANCAP rating for 25+ models

Reg No.
-

Ext Colour
Moonstone Gray Metallic

History
-

Seats
5 seats

CO2 Emissions
★★★★☆
29 grams/km

Energy Economy
★★★★☆
Annual fuel cost not available
1.3L per 100km

Actual figures and cost per year will vary based on proportion of hybrid mode driving and battery charging schedule. Emissions and Energy Economy figures standardised to 3P WLTP.

Stock ID: 524825



Archibald Cars | Phone 09 408 1900 | Email sales@amotors.co.nz
143 Commerce Street, Kaitaia, New Zealand
www.archibaldcars.co.nz