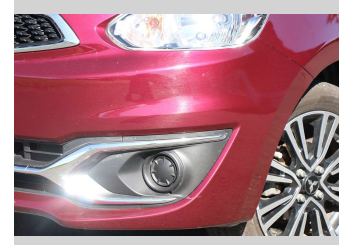
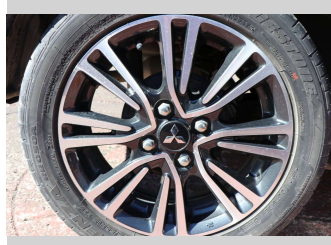
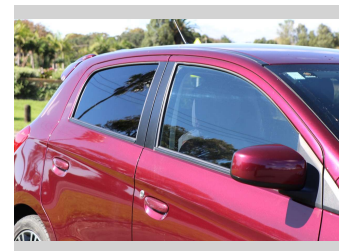
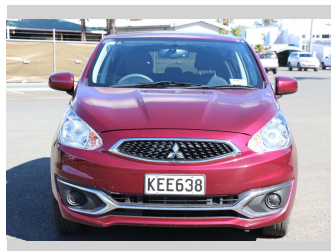


# 2016 Mitsubishi Mirage XLS 1.2P/CVT/HA/5DR



Purchase Price

**\$12,990**

Includes GST, Registration & Licensing

Finance may be available on this vehicle. Ask one of our friendly staff for more information.



Gain peace of mind with Mechanical Breakdown Insurance. **Ask us how.**



## Top features

None Listed

Body Style

**5 door, Hatchback**

Odometer

**18,216 km**

Engine

**1198 cc, Electronic Fuel**

Fuel Type

**Petrol**

Transmission

**CVT**

Wheels

-

VIN

**MMAXTA03AGH003136**

Interior

-

Safety



Based on 2025 UCSR rating for 12-20 models

Reg No.

**KEE638**

Ext Colour

**Red**

History

**NZ New**

Seats

**5 seats**

CO2 Emissions

★★★★☆

**131 grams/km**

Energy Economy

★★★★☆☆

**Annual fuel cost of \$2,120**

**5.4L per 100km**

Cost per year is an estimate based on petrol price of \$2.80 per litre and an average distance of 14000 km. Emissions and Energy Economy figures standardised to 3P WLTP.

**Stock ID: 1506232**



Archibald Cars | Phone 09 408 1900 | Email sales@amotors.co.nz  
143 Commerce Street, Kaitaia, New Zealand  
www.archibaldcars.co.nz