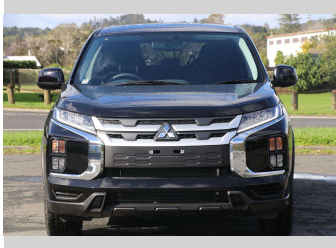
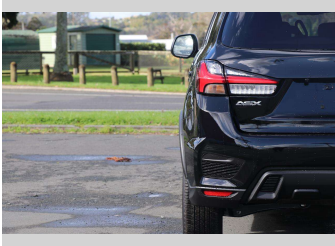
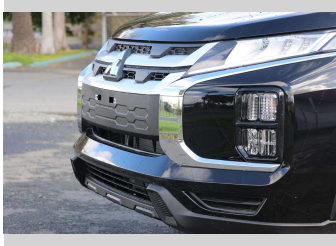


# 2025 Mitsubishi ASX LS 2.0P/CVT



Purchase Price

**\$27,990**

Includes GST  
Excludes on-road costs of \$933

Finance may be available on this vehicle. Ask one of our friendly staff for more information.



Gain peace of mind with Mechanical Breakdown Insurance. **Ask us how.**



## Top features

None Listed

Body Style

**5 door, Station Wagon**

Odometer

-

Engine

**1998 cc, Electronic Fuel**

Fuel Type

**Petrol**

Transmission

**CVT**

Wheels

-

VIN

**JMFXTGA2WRU008707**

Interior

-

Safety



Based on 2023 VSRR rating

Reg No.

-

Ext Colour

**Amethyst Black**

History

-

Seats

**5 seats**

CO2 Emissions

★★★★☆☆

**196 grams/km**

Energy Economy

★★☆☆☆☆

**Annual fuel cost of \$3,330  
8.5L per 100km**

Cost per year is an estimate based on petrol price of \$2.80 per litre and an average distance of 14000 km. Emissions and Energy Economy figures standardised to 3P WLTP.

**Stock ID: 495361**



Archibald Cars | Phone 09 408 1900 | Email [sales@amotors.co.nz](mailto:sales@amotors.co.nz)  
143 Commerce Street, Kaitaia, New Zealand  
[www.archibaldcars.co.nz](http://www.archibaldcars.co.nz)