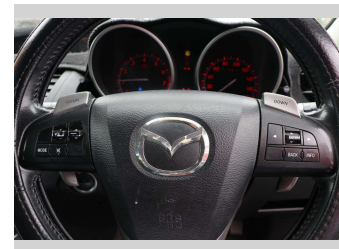
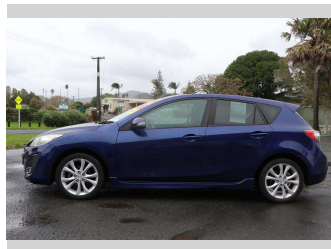
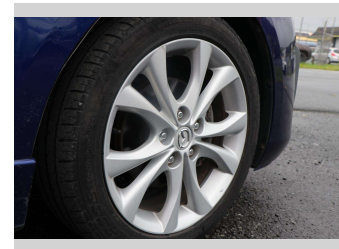



2009 Mazda Axela




Purchase Price **\$9,990**
Includes GST, Registration & Licensing

Finance may be available on this vehicle. Ask one of our friendly staff for more information.



Gain peace of mind with Mechanical Breakdown Insurance. **Ask us how.**



Top features

None Listed

Body Style
Hatchback

Odometer
129,388 km

Engine
1998 cc, Electronic Fuel


Fuel Type
Petrol

Transmission
CVT

Wheels
-

VIN
7AT0C13JX21105245

Interior
-

Safety

Based on 2024 UCSR rating for 09-13 models

Reg No.
NGZ713

Ext Colour
Blue

History
Ex-Overseas

Seats
5 seats

CO2 Emissions
★★★★☆
183 grams/km

Energy Economy
★★★☆☆
Annual fuel cost of \$2,980
7.6L per 100km

Cost per year is an estimate based on petrol price of \$2.80 per litre and an average distance of 14000 km. Emissions and Energy Economy figures standardised to 3P WLTP.

Stock ID: 1505992



Archibald Cars | Phone 09 408 1900 | Email sales@amotors.co.nz
143 Commerce Street, Kaitaia, New Zealand
www.archibaldcars.co.nz