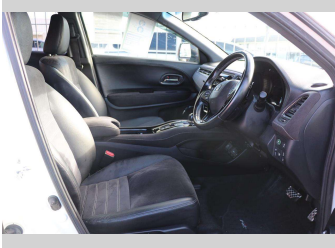
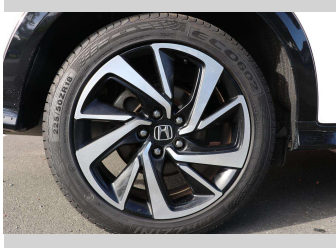
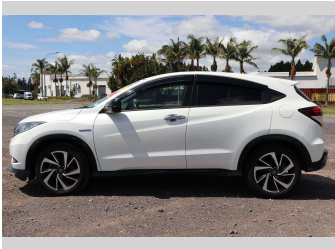


# 2016 Honda Vezel



Purchase Price

Includes GST, Registration & Licensing

\$21,490

Finance may be available on this vehicle. Ask one of our friendly staff for more information.



Gain peace of mind with Mechanical Breakdown Insurance. **Ask us how.**



Top features

None Listed

Body Style  
**Station Wagon**

Odometer  
**86,298 km**

Engine  
**1496 cc, Hybrid**

Fuel Type  
**Petrol**

Transmission  
**CVT**

Wheels  
**-**

VIN  
**7AT08GDHX24206591**

Interior  
**-**

Safety



Based on 2024 VSRR rating

Reg No.  
**QUZ622**

Ext Colour  
**White**

History  
**-**

Seats  
**5 seats**

CO2 Emissions  
**★★★★☆**  
**113 grams/km**

Energy Economy  
**★★★★☆☆**

**Annual fuel cost of \$1,880**  
**4.8L per 100km**

Cost per year is an estimate based on petrol price of \$2.80 per litre and an average distance of 14000 km. Emissions and Energy Economy figures standardised to 3P WLTP.

**Stock ID: 533744**



Waipapa Autocourt | Phone 09 407 6430 | Email info@waipapacars.co.nz  
2047 State Highway 10, Waipapa, Kerikeri 0295, New Zealand  
www.waipapacars.co.nz