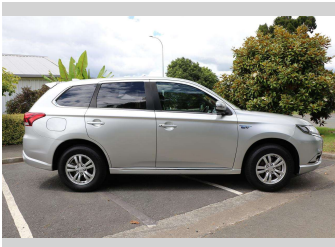
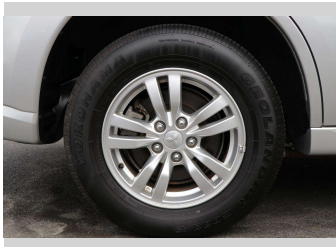
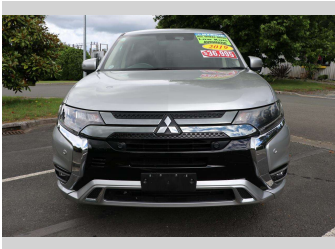


2019 Mitsubishi Outlander PHEV



Purchase Price

Includes GST, Registration & Licensing

\$32,990

Finance may be available on this vehicle. Ask one of our friendly staff for more information.



Gain peace of mind with Mechanical Breakdown Insurance. **Ask us how.**



Top features

- » 4WD/4x4
- » ABS Brakes
- » Air Bag(s)
- » Air Conditioning
- » Alloys
- » Blue Tooth
- » Central Locking
- » Electric Mirrors
- » Electric Windows
- » Forward Collision Aler...
- » Heated Seats
- » Keyless Operating Syst...
- » Lane Deviation
- » Parking Sensors
- » Remote Locking
- » Reversing Camera
- » Tinted Windows

Body Style

5 door, Station Wagon

Odometer

44,677 km

Engine

2350 cc, Plug-In Hybrid

Fuel Type

Petrol

Transmission

CVT

Wheels

-

VIN

7AT0CJ3MX23700734

Interior

Black

Safety



Based on 2024 UCSR rating for 12-21 models

Reg No.

QGN693

Ext Colour

Silver

History

-

Seats

5 seats

CO2 Emissions

★★★★★☆☆

42 grams/km

Energy Economy

★★★★☆☆☆☆

**Annual fuel cost not available
6.2L per 100km**

Actual figures and cost per year will vary based on proportion of hybrid mode driving and battery charging schedule. Emissions and Energy Economy figures standardised to 3P WLTP.

Stock ID: 563276



Waipapa Autocourt | Phone 09 407 6430 | Email info@waipapacars.co.nz
2047 State Highway 10, Waipapa, Kerikeri 0295, New Zealand
www.waipapacars.co.nz