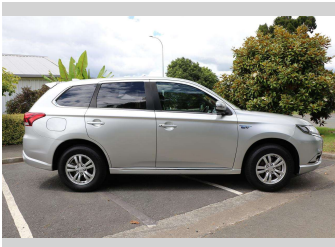
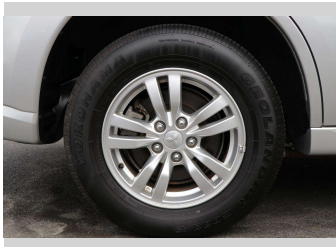
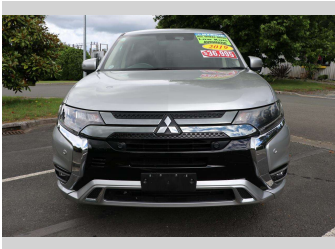


# 2019 Mitsubishi Outlander PHEV



Purchase Price

Includes GST, Registration & Licensing

**\$32,990**

Finance may be available on this vehicle. Ask one of our friendly staff for more information.



Gain peace of mind with Mechanical Breakdown Insurance. **Ask us how.**



### Top features

- » 4WD/4x4
- » ABS Brakes
- » Air Bag(s)
- » Air Conditioning
- » Alloys
- » Blue Tooth
- » Central Locking
- » Electric Mirrors
- » Electric Windows
- » Forward Collision Aler...
- » Heated Seats
- » Keyless Operating Syst...
- » Lane Deviation
- » Parking Sensors
- » Remote Locking
- » Reversing Camera
- » Tinted Windows

Body Style

**5 door, Station Wagon**

Odometer

**44,677 km**

Engine

**2350 cc, Plug-In Hybrid**

Fuel Type

**Petrol**

Transmission

**CVT**

Wheels

-

VIN

**7AT0CJ3MX23700734**

Interior

**Black**

Safety



Based on 2024 UCSR rating for 12-21 models

Reg No.

**QGN693**

Ext Colour

**Silver**

History

-

Seats

**5 seats**

CO2 Emissions

★★★★★☆☆

**42 grams/km**

Energy Economy

★★★★☆☆☆☆

**Annual fuel cost not available  
6.2L per 100km**

Actual figures and cost per year will vary based on proportion of hybrid mode driving and battery charging schedule. Emissions and Energy Economy figures standardised to 3P WLTP.

**Stock ID: 563276**



Waipapa Autocourt | Phone 09 407 6430 | Email [info@waipapacars.co.nz](mailto:info@waipapacars.co.nz)  
2047 State Highway 10, Waipapa, Kerikeri 0295, New Zealand  
[www.waipapacars.co.nz](http://www.waipapacars.co.nz)