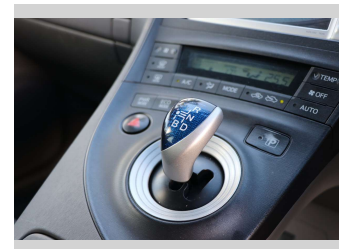
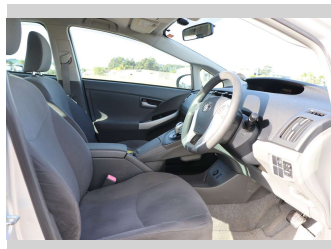
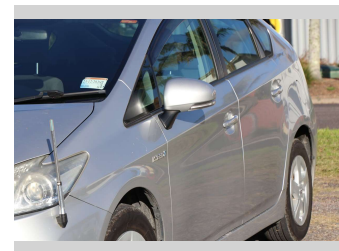


# 2010 Toyota Prius HYBRID



**Purchase Price** **\$12,990**  
Includes GST, Registration & Licensing

Finance may be available on this vehicle. Ask one of our friendly staff for more information.

Gain peace of mind with Mechanical Breakdown Insurance. **Ask us how.**

**Top features**  
None Listed

Body Style  
**Hatchback**

Odometer  
**98,934 km**

Engine  
**1797 cc, Hybrid**

Fuel Type  
**Petrol**

Transmission  
-

Wheels  
-

VIN  
**7AT0H637X21224336**

Interior  
-

Safety  
  
Based on 2025 UCSR rating for 09-16 models

Reg No.  
**NSJ946**

Ext Colour  
**Silver**

History  
**Ex-Overseas**

Seats  
**5 seats**

CO2 Emissions  
**★★★★☆**  
**94 grams/km**

Energy Economy  
**★★★★☆☆**  
**Annual fuel cost of \$1,570**  
**4L per 100km**

Cost per year is an estimate based on petrol price of \$2.80 per litre and an average distance of 14000 km. Emissions and Energy Economy figures standardised to 3P WLTP.

**Stock ID: 1506273**



Waipapa Autocourt | Phone 09 407 6430 | Email info@waipapacars.co.nz  
2047 State Highway 10, Waipapa, Kerikeri 0295, New Zealand  
www.waipapacars.co.nz