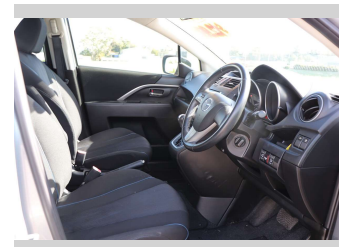
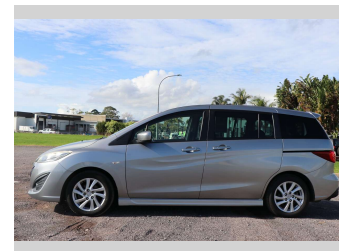


2011 Mazda Premacy



Purchase Price

\$12,990

Includes GST, Registration & Licensing

Finance may be available on this vehicle. Ask one of our friendly staff for more information.



Gain peace of mind with Mechanical Breakdown Insurance. **Ask us how.**



Top features

- » Air Bag(s)
- » Air Conditioning
- » Bluetooth
- » Central Locking
- » Electric Mirrors
- » Electric Opening Doors
- » Electric Windows
- » I Stop
- » Keyless Operating Syst...
- » Remote Locking
- » Tinted Windows

Body Style

5 door, Station Wagon

Odometer

100,243 km

Engine

1998 cc, Electronic Fuel

Fuel Type

Petrol

Transmission

Auto

Wheels

-

VIN

7AT0C133X23130473

Interior

Black

Safety



Based on 2025 VSRR rating

Reg No.

QAW519

Ext Colour

Silver

History

Ex-Overseas

Seats

7 seats

CO2 Emissions

★★★★☆☆

189 grams/km

Energy Economy

★★☆☆☆☆

**Annual fuel cost of \$3,100
7.9L per 100km**

Cost per year is an estimate based on petrol price of \$2.80 per litre and an average distance of 14000 km. Emissions and Energy Economy figures standardised to 3P WLTP.

Stock ID: 1506231



Waipapa Autocourt | Phone 09 407 6430 | Email info@waipapacars.co.nz
2047 State Highway 10, Waipapa, Kerikeri 0295, New Zealand
www.waipapacars.co.nz