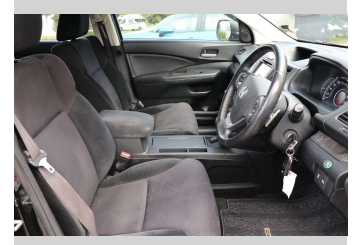
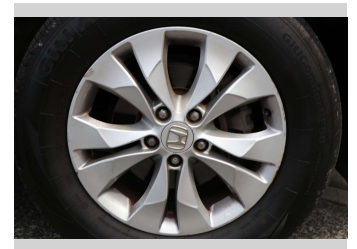
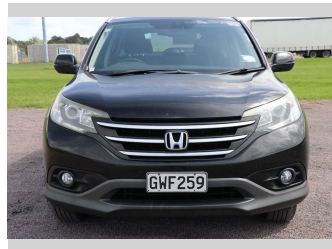



2013 Honda Crv N 2.4P/4WD/5AT




Purchase Price **\$16,990**
Includes GST, Registration & Licensing

Finance may be available on this vehicle. Ask one of our friendly staff for more information.



Gain peace of mind with Mechanical Breakdown Insurance. **Ask us how.**



Top features

None Listed

Body Style
5 door, Station Wagon

Odometer
152,591 km

Engine
2354 cc, Electronic Fuel

Fuel Type
Petrol

Transmission
CVT

Wheels
-

VIN
MRHRM4870DP040195

Interior
-

Safety



Based on 2025 UCSR rating for 12-17 models

Reg No.
GWF259

Ext Colour
Black

History
NZ New

Seats
5 seats

CO2 Emissions
★ ★ ★ ☆ ☆ ☆
233 grams/km

Energy Economy
★ ☆ ☆ ☆ ☆ ☆

Annual fuel cost of \$3,800
9.7L per 100km

Cost per year is an estimate based on petrol price of \$2.80 per litre and an average distance of 14000 km. Emissions and Energy Economy figures standardised to 3P WLTP.

Stock ID: 1506188



Waipapa Autocourt | Phone 09 407 6430 | Email info@waipapacars.co.nz
2047 State Highway 10, Waipapa, Kerikeri 0295, New Zealand
www.waipapacars.co.nz