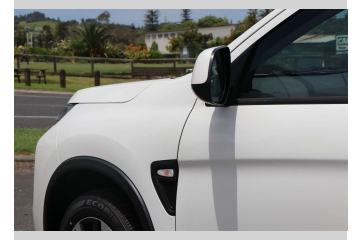
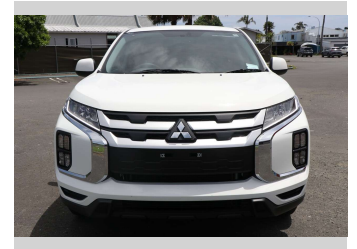
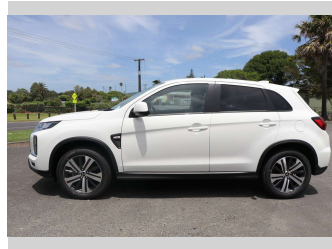


# 2026 Mitsubishi ASX LS 2.0P/CVT




**Purchase Price** **\$28,990**

Includes GST  
Excludes on-road costs of \$995

Finance may be available on this vehicle. Ask one of our friendly staff for more information.



Gain peace of mind with Mechanical Breakdown Insurance. **Ask us how.**



**Top features**

None Listed

**Body Style**  
5 door, SUV

**Odometer**  
-

**Engine**  
1998 cc, Electronic Fuel

**Fuel Type**  
Petrol


**Transmission**  
CVT, 2WD

**Wheels**  
18", Factory Alloys

**VIN**  
JMFXTGA2WRU026811

**Interior**  
-

**Safety**



Based on 2025 VSRR rating

**Reg No.**  
-

**Ext Colour**  
Cardrona

**History**  
Brand New

**Seats**  
5 seats

**CO2 Emissions**  
★★★★☆☆  
196 grams/km

**Energy Economy**  
★★★★☆☆  
**Annual fuel cost of \$3,330**  
**8.5L per 100km**

Cost per year is an estimate based on petrol price of \$2.80 per litre and an average distance of 14000 km. Emissions and Energy Economy figures standardised to 3P WLTP.

**Stock ID: 521155**



Archibald Cars | Phone 09 408 1900 | Email sales@amotors.co.nz  
143 Commerce Street, Kaitaia, New Zealand  
www.archibaldcars.co.nz